



INTELLIGENT



CERTIFIED



POWERFUL



Ditec Valor Redundant

Automation for sliding doors
Systems for emergency exits

EN

Ditec Valor Redundant

In situations where **emergency exits** need to be automated, Ditec Entrematic offers a **modern and reliable redundancy system**. The system is equipped with a **special gear motor** managed by an **advanced electronic control panel**. All functions and accessories required for the emergency opening are **constantly controlled automatically**.

The redundant antipanic system can be applied to:

- VALOR L (1 and 2 wings)
- VALOR N (1 and 2 wings)
- VALOR T (1+1 and 2+2 wings)



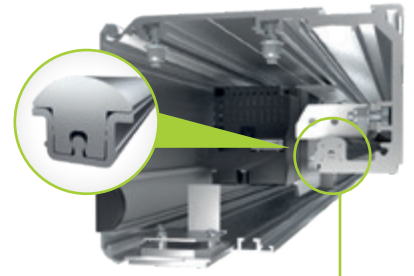
Integrated safety sensors



The MD1 display module is integrated or wall mounted to easily and accurately control and regulate functions



Emergency batteries



Sliding guide in EURAS CO with sound-absorbent seal



Integrated release handle (VALOR L and N)



Traction command group with dual-winding motor and advanced EL21 control panel



Plastic casing head

OUR EXPERTISE AT YOUR SERVICE

A complete range. A dedicated team of specialists. Excellence in technology and design. Passionate to be different.

Entrematic is a commercial partner with a complete range of entrance-automation solutions, which combines specialised know-how and high-profile brands.

The Ditec brand, has been a world leader for more than 40 years, offering a complete range of automation systems for gates, automatic doors and high-speed doors.



Safety above all else



INTELLIGENT

The special EL21 electrical panel runs **periodic checks** on system components, specifically devices necessary for emergency opening.

EL21 together with the exclusive **single-shaft double motor (Ditec patent)** ensure the door will open in the event of:

- Loss of power supply
- Fire alarm signal
- Partial or complete system malfunction



CERTIFIED

- Ditec Valor Redundant offers **high-level performance** simultaneously ensuring maximum safety of use and **complete compliance** with standards EN 16005 and DIN 18650
- TÜV SÜD certification guarantees up to 1,000,000 cycles



POWERFUL

- The Ditec redundant antipanic system is suitable for escape routes up to a max. leaf weight of **300 kg (2 wings)** or **260 kg (2+2 wings)**

Main functions of the system

Control panel	EL21
Description	for 1 motor 24 V DC
Mains power supply	230 V~ / 50-60 Hz
Batteries	■
Motor power supply	10 A - 24 V DC
Accessories power supply	0.5 A - 24 V DC
Electro-mechanical-lock power supply	1 A - 24 V DC
Thrust adjustment	■
Obstacle detection with sensitivity adjustment	■
Opening and closing speed setting	■
Independent open control	■
Independent partial opening control	■
Independent close control	■
Timer-controlled automatic closing (adjustable)	0 - 30 s
Automatic closing time self-adjustment (depending on the flow of people)	■
Safety during opening (slowdown speed)	■
Emergency reverse with presence sensor	■ (EN 16005 compliant)
Safety test and safety monitoring	■ (EN 16005 compliant)

Additional features for advanced applications

PLUS MP1 MODULE

Electrical connections for accessories
Manual closing control
Contact for opening key
Contact for closing key
Contact for people access visual/audio indicators
Dedicated connection for safety sensors equipped with safety test monitoring
General purpose outputs
Output for spot light; air blade power supply
Battery status monitoring facility with advanced test, to allow emergency opening



FULL COMPLIANCE WITH EU DIRECTIVES AND STANDARDS

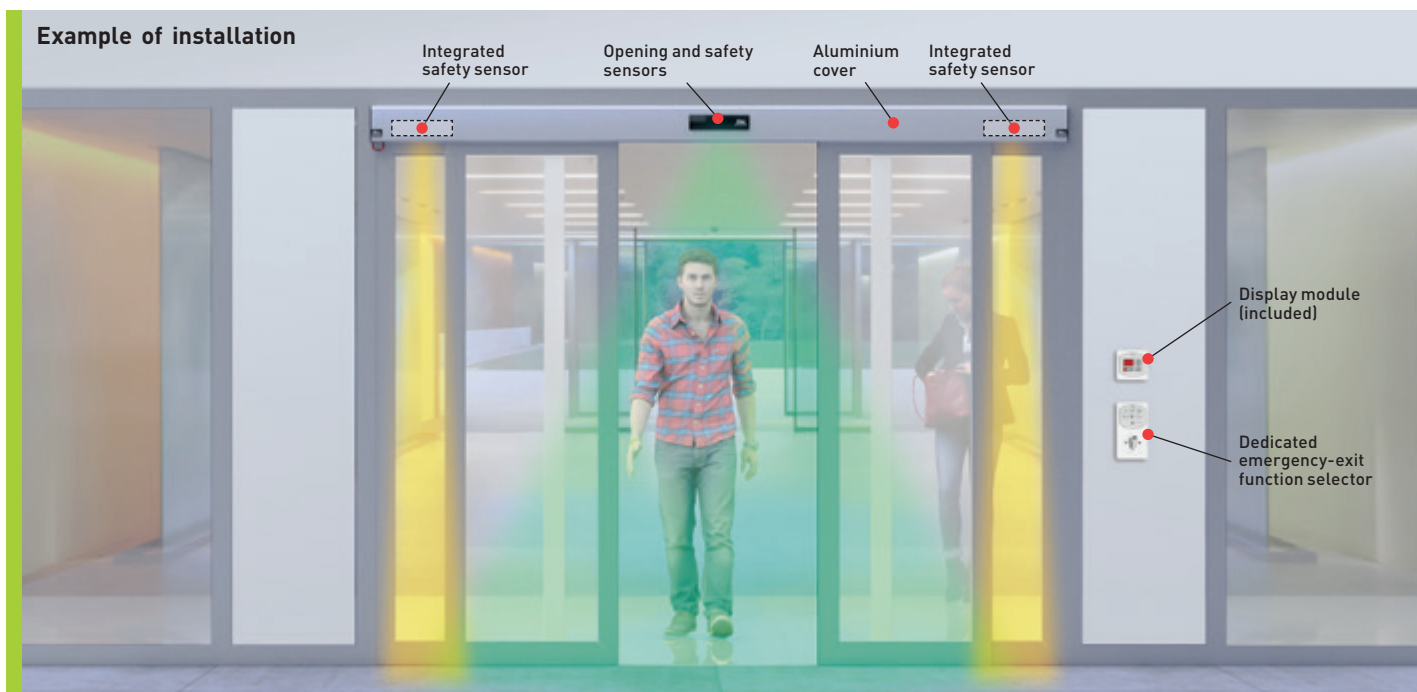


- **European Standard:** EN 16005 and DIN 18650-1 and -2
- **2006/42/CE** - Machinery directive
- **2004/108/CE** - Electromagnetic Compatibility Directive
- Guidelines for automatic sliding doors on emergency exits (AutSchR, edition 12/1997, Germany)

Technical specifications of available models

	VALOR L Redundant	VALOR N Redundant	VALOR T Redundant
Description	automation for sliding doors	automation for sliding doors	automation for telescopic sliding doors
Special uses	redundant emergency system	redundant emergency system	redundant emergency system
Stroke control	encoder	encoder	encoder
Casing	light	heavy	telescopic
Max. leaf weight	1 x 100 kg; 2 x 90 kg	1 x 120 kg; 2 x 120 kg; 1 x 150 kg (heavy wheels); 2 x 150 kg (heavy wheels)	2 x 100 kg; 4 x 65 kg
Maximum passageway opening mm	1 wing = 3215 2 wings = 3240	1 wing = 3215 2 wings = 3240	1+1 wing = 4306 2+2 wings = 4323
Duration test	1 million cycles	1 million cycles	1 million cycles
Power supply	230 V AC / 50-60 Hz	230 V AC / 50-60 Hz	230 V AC / 50-60 Hz
Maximum opening and closing speed	0.8 m/s (1 wing) 1.6 m/s (2 wings)	0.8 m/s (1 wing) 1.6 m/s (2 wings) 1.2 m/s if wing > 200 kg	0.8 m/s (1 wing) 1.6 m/s (2 wings)
Release system for manual opening	handle can be integrated into the head	handle can be integrated into the head	handle
Operating temperature	-10°C / +50°C	-10°C / +50°C	-10°C / +50°C
Protection rating	IP20	IP20	IP20
Product dimensions mm (H x P x L)	145 x 175 x L	145 x 175 x L	145 x 255 x L
Approvals	TÜV	TÜV	TÜV
Control panel	EL21	EL21	EL21

Example of installation



Accessori specifici

COMKR

Rotary key operated selector switch for **redundant** use (compulsory)



COMER

Electronic switch complete with **redundant** lock key (compulsory as an alternative to COMKR)



PAS024AST - PAS024AMT

Dual technology self-testing sensors, 24 GHz microwaves and active infrared, dual function, for **redundant sliding doors** safe operation, 12 - 24 V - IP 54 (compliant with the EN 16005 standard)



Entrematic Italy S.p.A.

Largo U. Boccioni, 1 • 21040 Origgio (VA) • Italy

Tel +39 02 963911 • Fax: +39 02 9650314

ditec@entrematic.com

www.ditecentrematic.com • www.entrematic.com

Cod. P222B - 02/2018
Ditec Valor Redundant
gdp milano 174765

Available in: France, Germany, Spain, Turkey and Canada.

For addresses and contact information see our website www.ditecentrematic.com

